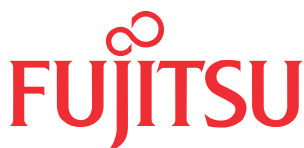


## DITAworks use for documentation projects at Fujitsu Enabling Software Technology GmbH

*“With growing documentation requirements, we saw a need for a tool that would help us to manage our Product documentation based on DITA Standard efficiently and comfortably as well as publish the documentation in different formats. With DITAworks, we found the right solution and after careful analysis, the \*instinctools team was able to bring the tool in our production environment in a short time.”*

**Ms. Inge Süß**

Director of QA & Documentation at  
Fujitsu Enabling Software Technology



Enabling Software Technology GmbH

Fujitsu Enabling Software Technology GmbH is a Munich-based software subsidiary of FUJITSU LIMITED and develops, among others, software in the field of software lifecycle management.

### Challenge

The initial situation at the Fujitsu Enabling Software Technology GmbH was characterized by the typical challenges in the product documentation: rising volumes and increasing complexity, driven by an increasing number of versions and variants, high quality requirements on the documentation as a product component, shortened development periods, different output formats and the need to integrate with the development process and the product itself.

Even before the beginning of the project, Fujitsu Enabling Software Technology GmbH utilized many advantages of the single-source publishing using DITA standards for the documentation: content once created used in several different documents, the publishing process allowed the output to various formats (Eclipse Help, HTML, PDF).

Since managing the documentation had become increasingly complex, there was an urgent need for an editorial system that would support the documentation projects optimally and yet seamlessly integrate into the existing development process. Existing content based on an earlier version of the DITA standard needed to be migrated to the current status. As the editorial team had been using XMetaL as editor for quite some time, this needed to be preferably retained. Even the long-established publication process needed to be (initially) retained.

### Solution

In response to these diverse challenges, Fujitsu Enabling Software Technology GmbH selected the software DITAworks from \*instinctools after an extensive trial.

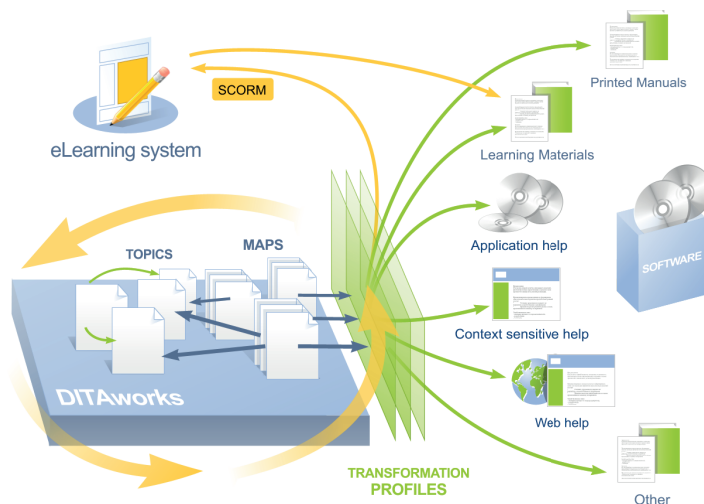
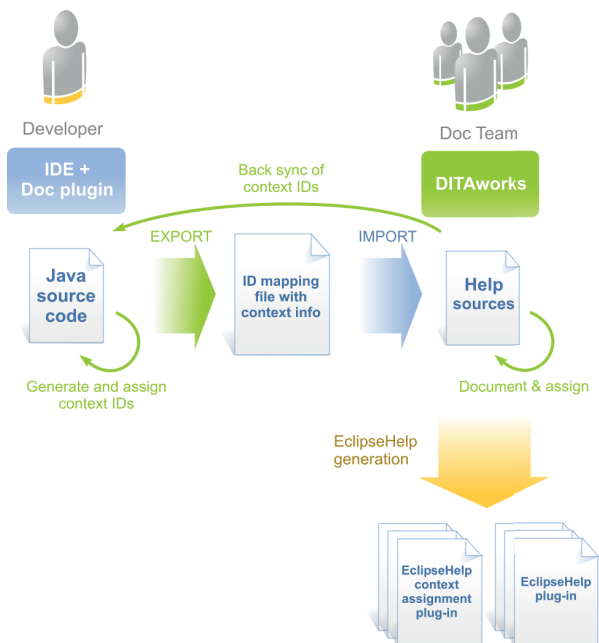
DITAworks is a software solution that allows creation and management of different types of documentations, such as manuals, training materials, process descriptions or online help, according to the single-source principle DITA standard. DITAworks supports the entire documentation lifecycle from modeling, through creating / editing, to publishing. Once created, content can be reused in different contexts and can be published in various formats such as XHTML, PDF, RTF, Eclipse Help, DocBook.

Fujitsu Enabling Software Technology GmbH deployed DITAworks solution for Eclipse which also has special functions for the documentation of Eclipse-based applications.

Existing content and the model were carefully analyzed. Recommendations for the migration to the latest DITA standard and integration with the existing development and publication process as well as the XMetaL-Editor were developed. \*instinctools completed the implementation of the recommendations in consultation with Fujitsu Enabling Software Technology GmbH.

# Result

After the existing content has been migrated to the latest DITA standard and its adoption completed in DITAworks, there are no obstacles in the immediate usage of the convenient options that DITAworks offers:



The DITAworks solution for Eclipse Help addresses the key challenges in the documentation of Eclipse RCP applications "out-of-the box". But as Fujitsu Enabling Software Technology GmbH regarding had special needs regarding migration and integration, \*instinctools supported in the implementation. The editorial team of Fujitsu Enabling Software Technology GmbH is now optimally equipped for further documentation of their applications.

- The integration with the development process has taken place
- A plug-in for the Eclipse IDE enables the assignment of Help Contexts and synchronization with the source code
- ID Wizards help documentation and development teams for synchronization

Dynamic Context ID Mapping supported (DTP approach)

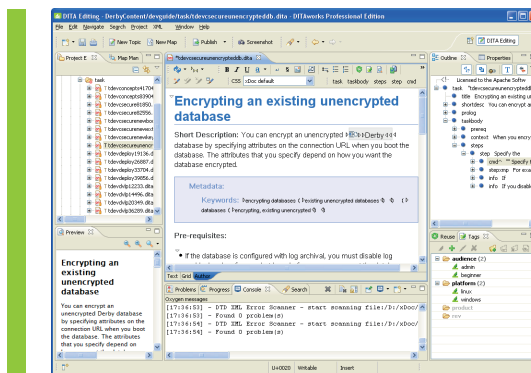
- Specific transformations for Eclipse Help are available

Specific validations for Eclipse Help are available

- With the DITA specialization for Eclipse Help, Eclipse help deliverables (such as Contexts, Live Actions and Cheat Sheets) can be defined

- The technical writers are working with their preferred editor

- Existing Eclipse Help Plug-ins can be imported.



\*instinctools GmbH is a member of Eclipse Foundation and offers Software and Services for smart solutions in Information Management. \*instinctools' service offerings include consulting regarding appropriate software components and application architecture selection, application development and maintenance. \*instinctools' many years of experience in Java and Eclipse development help them in successfully implementing the Eclipse project strategy for their customers.